



Barry-Eaton District Health Department

Be Active • Be Safe • Be Healthy

COMMUNITY HIGHLIGHTS

May 2018

YOU'RE INVITED!

Monthly Coalition

Schedule

- B. Healthy Coalition, May 14th, 8:30–9:30 am, BEDHD, Hastings
- Eaton Rapids Health Alliance, May 22nd, 3:30–5:00 pm, Eaton Rapids Medical Center, Eaton Rapids
- Barry County Tobacco Reduction Coalition, contact Lauren Cibor at lcibor@bedhd.org
- Eaton County Oral Health Coalition, May 3rd, 1:00–2:00 pm, BEDHD, Charlotte

TIME OF SALE OR TRANSFER PROGRAM REPEALED

The BEDHD Board of Health and both counties' Boards of Commissioners have voted to repeal *the Regulations Governing On-site Sewage and On-site Water Supply System Evaluation and Maintenance in Barry and Eaton County, Michigan*, which included the Time of Sale or Transfer (TOST) program. As of May 5, 2018, the TOST program is no longer in effect and there is no BEDHD requirement for an evaluation, review, or authorization to transfer for properties with on-site wells or sewage systems. BEDHD will continue to investigate complaints and do site visits in order to issue well and sewage system permits. The correction of well and sewage system conditions that are a threat to public health and found through complaints or permit site visits will be conducted under the authority of BEDHD's Sanitary and Nuisance Codes and the Michigan Public Health Code. Individuals with questions or concerns can contact BEDHD Environmental Health: (269) 945-9516 (select 3, then 5; Barry), (517) 541-2615 (Eaton).

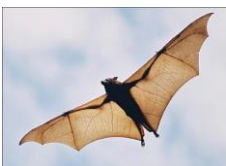
CHANGE A CHILD'S LIFE—BECOME A FOSTER PARENT

Have you ever considered becoming a foster parent? There are more than 13,000 foster children in Michigan who are in need of a safe, loving home until they can be reunited with their families. There is no perfect makeup of a foster parent, and each foster family is different. It doesn't matter if you are married or single, a homeowner or renter, wealthy or not. All that matters is that you can provide a healthy and supportive environment for a child in need. To find out more about what you can do to help or to learn about the process of becoming a foster parent, visit <https://www.michigan.gov/hopeforahome>, call 1-855-MICHKIDS, or text "FOSTER" to 667873.



Need Dental Care? Visit MCDC!

My Community Dental Centers (MCDC) offers dental services to those who have Medicaid, MICHild, the Healthy Michigan Plan, and private insurance, as well as to those who are don't have insurance. MCDC sees both children and adults. Its services include oral exams and cleaning, fillings, tooth removal, dentures, and more. Call (877) 313-6232 for more information about services near you or visit <http://mydental.org>. The clinics closest to Barry and Eaton counties are at 4700 Kalamazoo Ave SE, Suite 200, in Kentwood, and at 623 Courthouse Dr. in Charlotte.



BAT SEASON IS HERE

Bats are starting to come out of hibernation, and, while valuable to our environment, bats can also carry rabies. Bats have very small teeth, and a bite from one may not be felt. Any direct contact with a bat means a possible exposure to rabies. If you think you may have been exposed to a bat, capture the bat and immediately contact BEDHD. DO NOT LET THE BAT GO. If you find a bat in the same room as a person who may not know if contact has occurred, such as a sleeping person, a child, or someone who is mentally disabled or intoxicated, you should also capture the bat. For information on how to safely capture a bat in your home and when you should contact BEDHD, see <https://bit.ly/2KmyeKq>.



Contact Us

For more information on items in this newsletter, contact Abigail Lynch, Community Health Promotion Specialist, at (517) 541-2644 or alynch@bedhd.org.

NEW FINDINGS ON THE HEALTH OF ADULTS IN BARRY AND EATON COUNTIES

BEDHD is pleased to share the newly published results of the 2014-2016 Barry-Eaton Behavioral Risk Factor Survey (BRFS)! This survey is an important tool that BEDHD uses to monitor the health status of the adult population in Barry and Eaton counties and to identify and solve community health problems. It is published every three years and measures various indicators that contribute to adult health, including behaviors, medical conditions, and preventive health care practices. BEDHD welcomes community members and organizations to utilize the data found in the 2014-2016 Barry County and Eaton County BRFS reports, available online at <https://bit.ly/2raPyKy>. Additional data and analyses are available: contact Susan Peters, BEDHD Health Analyst, at speters@bedhd.org.

PROTECT YOURSELF FROM TICKS AND MOSQUITOES

With the outdoor activities that come with spring weather also come ticks and mosquitoes. While many tick and mosquito bites are just irritations, sometimes those bites can be more serious.

Residents should know how to protect themselves from illnesses spread by infected ticks (especially Lyme disease) and mosquitoes (especially West Nile virus). Residents should also note that they can submit ticks to BEDHD for testing—if the tick was found on a human or engorged with human blood and is the right species for Lyme disease, it can be sent to the state for Lyme disease testing. For more information on tick- and mosquito-borne diseases, how to protect yourself from ticks and mosquitoes, and how to submit ticks for Lyme disease testing, visit <https://bit.ly/2KmyeKq>.

DO 1 THING: MONTHLY EMERGENCY PREPAREDNESS ACTIVITY

Work, School, and Community. Disasters can happen at any time, in any place. While many people are prepared for emergencies at home, it's also important to think about what you would do if an emergency occurred when you and your family were at work or school or in the community. Talk with your employers or school administrators about their plans for emergencies. If you are a workplace, community center, business, or school, be sure to keep persons with disabilities in mind when making your emergency plan, and consider asking the local police or fire department to review your plan. Make sure who people depend on you or who wouldn't think of making an emergency kit, like college students or elderly adults, have kits and know what it is them. For more information about preparing for an emergency, visit <http://do1thing.com>.

COUNTY IMMUNIZATION REPORT CARDS

The Michigan Department of Health and Human Services (MDHHS) has released its quarterly County Immunization Report Cards. Barry and Eaton counties' results are below. Notably, Eaton County is doing very poorly on fully immunized (including the hepatitis A vaccine) 19–35 month olds, with just over 50% of children fully vaccinated. BEDHD provides all recommended vaccines for youth and accepts Medicaid (MICHild, Healthy Kids), youth without insurance, and many private insurances—call to make an appointment (Eaton: [517] 541-2630, Barry: [269] 945-9516)!

	Barry	Eaton
Primary Vaccination Series, 19–35 month olds	62.9% (20 th out of 84 counties)	52% (60 th out of 84 counties)
Adolescent Vaccination Series, 13–17 years	84.5% (33 rd out of 84 counties)	80.3% (48 th out of 84 counties)

MAY IS HEPATITIS AWARENESS MONTH

Hepatitis A, B, and C are the most common forms of viral hepatitis in the United States, and millions of Americans are affected. People may not even know if they have or have had hepatitis—they may have had no or mild symptoms—but it can also cause very serious illness lasting months. Hepatitis B and C can turn into a chronic, lifelong infection that can cause serious health problems, like liver damage, liver cancer, and even death. Most people with chronic hepatitis don't know they are infected and can live with the disease for decades without having symptoms or feeling sick. The good news is hepatitis A and B can be prevented through vaccination! Learn more at <https://www.cdc.gov/hepatitis/abc/>, and call your health care provider or BEDHD (Eaton: [517] 541-2630, Barry: [269] 945-9516) to make an appointment to get vaccinated. *Note: Michigan currently has a hepatitis A outbreak; learn more at <http://www.michigan.gov/hepaoutbreak>.*