

# Food Assistance for Families in Eaton Rapids

## What is the Food Assistance Program (FAP)?

*FAP is a benefit program that helps low-income families buy food. It is part of the federal program that used to be called Food Stamps.*

## How does it work?

*The Department of Health and Human Services (DHHS) puts monthly FAP benefits on a Bridge Card. The family uses the Bridge Card to pay for groceries. A Bridge Card is like a debit card for food. A Bridge Card can be used at most grocery stores and farmers markets. There are some restrictions on what you may buy with your Bridge Card (e.g., no alcohol or tobacco purchases).*



## Are there income and asset limits to qualify for the Food Assistance Program (FAP)?

- *Yes, there are income and asset limits for FAP. Go to <https://www.mibridges.michigan.gov/access/> to see if you qualify. FAP eligibility is based on household size, monthly household income, and assets. Households includes all the people who purchase and prepare meals together. Children under age 22 who live at home are part of their parents' household.*
- *A family must also have less than \$5,000 dollars in countable assets to be eligible for FAP. Some assets don't count for your asset test, such as your home and your vehicles (up to \$15,000 fair market value).*
- *If your entire household is already eligible for the Family Independence Program (FIP), State Disability Assistance (SDA), or Supplemental Security Income (SSI), you are exempt from the asset test above.*

## Where can I use my Bridge Card?

*You can use your Bridge Card at most grocery stores and markets. Since it is like a debit card, it provides privacy for you when paying. **The Eaton Rapids Medical Center Farmers Market accepts Bridge Cards and participates in Double Up Food Bucks (see back of flyer).***

## How long does it take to get food assistance if approved?

*Typically about 30 days. (If you are homeless or have little to no money, you might be able to get emergency food assistance. Emergency applications are processed within 7 days).*

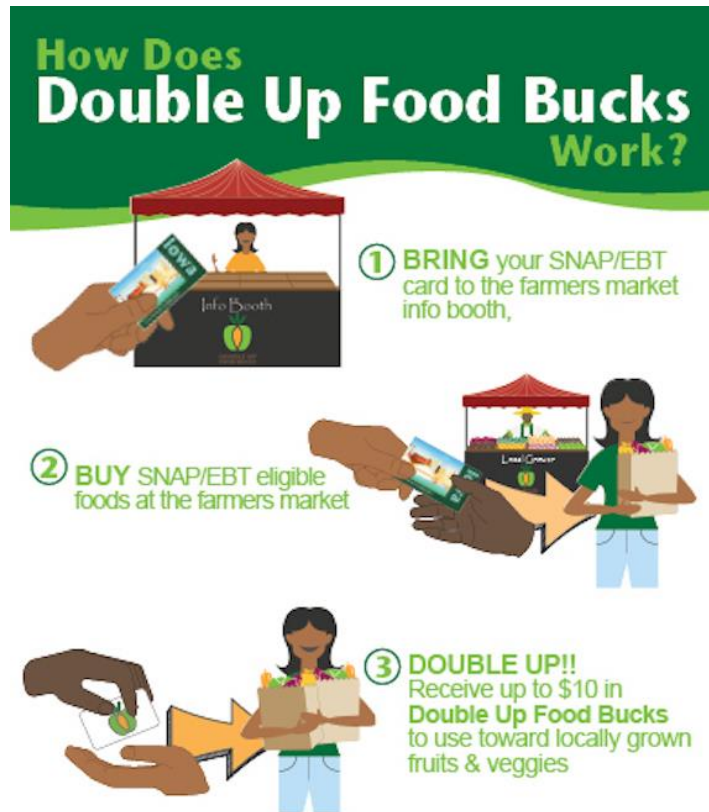
## How do I apply for food assistance benefits?

*The fastest way to apply is online. Use the MI Bridges site:*

*<https://www.mibridges.michigan.gov/access/> to see if you're eligible and to apply for assistance. You can also apply in person at your local DHHS office at 1050 Independence Blvd., Charlotte, MI – 48813. Phone: 517-543-0860.*

## How do I use my Bridge Card to participate in the Double Up Food Bucks Program?

*Bring your Bridge Card (called your SNAP/EBT card below) to the farmers market and buy fruits and vegetables and get up to \$10 extra worth of fruits and vegetables at the market!*



### EATON RAPIDS FARMERS MARKETS

#### Eaton Rapids Medical Center Farmers Market\*

1500 South Main Street, Eaton Rapids, MI 48827

Website: <http://www.eatonrapidsmedicalcenter.org>

Wednesdays May 23 - mid-October, Hours: 3-6PM

**WIC Project Fresh, SNAP/Bridge Cards, Market FRESH**

**\*Double Up Food Bucks available at this market!**

#### Eaton Rapids Community Market

East Hamlin Street, Downtown, Eaton Rapids, MI 48827 Eaton County

Saturdays Jun 30 – Sep, Hours: 8AM - 1PM

Information brought to you by:



Eaton Rapids  
Health Alliance